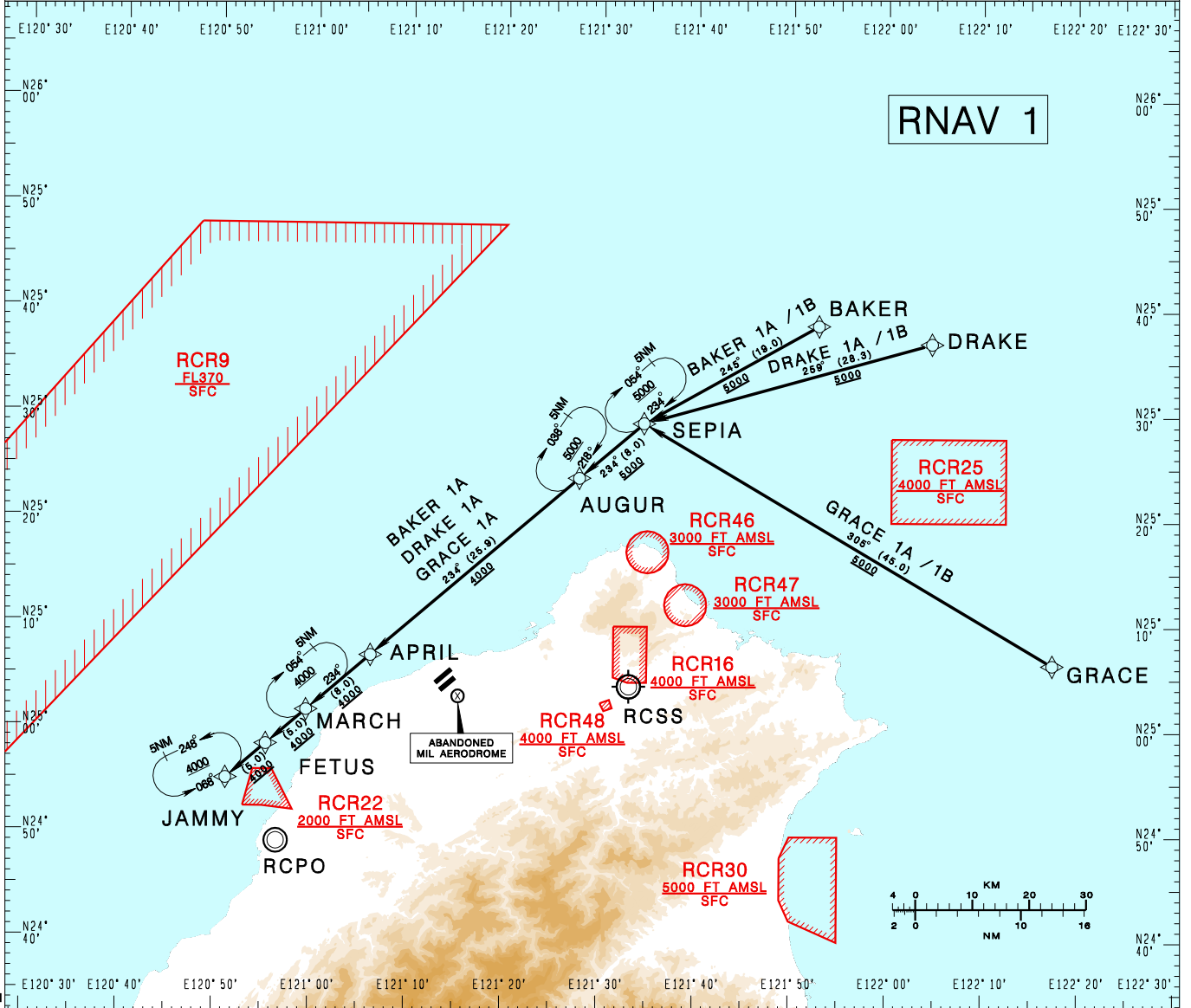


臺灣桃園國際機場

TAIPEI/TAIWAN TAOYUAN INTL AD BAKER 1A RNAV DRAKE 1A RNAV GRACE 1A RNAV
BAKER 1B RNAV DRAKE 1B RNAV GRACE 1B RNAV

RCTP STAR

TAIPEI ACC 125.5 123.6	TAIPEI APP 125.1 128.5	ATIS 127.6	 MSA ARP 25NM	
Apt Elev: 108'		Trans Level: FL130		Trans Alt: 11,000'
BEARINGS ARE MAGNETIC; DISTANCES ARE NAUTICAL MILES; ELEVATIONS, HEIGHTS IN FEET				



CHANGES: RCR49 COMPLETELY WITHDRAWN; NOTE

BAKER ONE ALFA RNAV ARRIVAL
From BAKER to SEPIA then AUGUR, APRIL, MARCH, FETUS to JAMMY.

DRAKE ONE ALFA RNAV ARRIVAL
From DRAKE to SEPIA then AUGUR, APRIL, MARCH, FETUS to JAMMY.

GRACE ONE ALFA RNAV ARRIVAL
From GRACE to SEPIA then AUGUR, APRIL, MARCH, FETUS to JAMMY.

BAKER ONE BRAVO RNAV ARRIVAL
From BAKER to SEPIA then AUGUR.

DRAKE ONE BRAVO RNAV ARRIVAL
From DRAKE to SEPIA then AUGUR.

GRACE ONE BRAVO RNAV ARRIVAL
From GRACE to SEPIA then AUGUR.

NOTE
ATS surveillance required.